

# Vertical cable management system

■ For vertical cable management and storage the panels with 75 mm high plastic pins are used. They are mounted on the side of the installation vertical rails and together with them they are infinitely adjustable to the depth of the cabinet. They are available with one or two rows of plastic pins. The double-row panel can be covered with a hinged / removable cover.



RAB-VP-010-X1



RAB-VP-010-X1

## ■ RAB-VP-Oxx-X1

Swing, removable cover for cable management vertical panel.

| Swing / removable cover | Height (U) |
|-------------------------|------------|
| RAB-VP-O10-X1           | 10         |
| RAB-VP-O15-X1           | 15         |
| RAB-VP-O18-X1           | 18         |
| RAB-VP-O22-X1           | 22         |
| RAB-VP-O27-X1           | 27         |
| RAB-VP-O32-X1           | 32         |
| RAB-VP-O37-X1           | 37         |
| RAB-VP-O42-X1           | 42         |
| RAB-VP-O45-X1           | 45         |
| RAB-VP-O47-X1           | 47         |



## ■ RAB-VP-H10-X1

Cable management vertical panel 10U - comb, for cabinets 800 mm width, RAL9005.



RAB-VP-H42-Y1



RAB-VP-H42-X1

## ■ RAB-VP-Hxx-Y1

Cable management vertical panel – single row, RAL9005.

| Single row    | Height (U) |
|---------------|------------|
| RAB-VP-H10-Y1 | 10         |
| RAB-VP-H15-Y1 | 15         |
| RAB-VP-H18-Y1 | 18         |
| RAB-VP-H22-Y1 | 22         |
| RAB-VP-H27-Y1 | 27         |
| RAB-VP-H32-Y1 | 32         |
| RAB-VP-H37-Y1 | 37         |
| RAB-VP-H42-Y1 | 42         |
| RAB-VP-H45-Y1 | 45         |
| RAB-VP-H47-Y1 | 47         |

## ■ RAB-VP-Hxx-X1

Cable management vertical panel – double row, RAL9005.

| Double row    | Height (U) |
|---------------|------------|
| RAB-VP-H10-X1 | 10         |
| RAB-VP-H15-X1 | 15         |
| RAB-VP-H18-X1 | 18         |
| RAB-VP-H22-X1 | 22         |
| RAB-VP-H27-X1 | 27         |
| RAB-VP-H32-X1 | 32         |
| RAB-VP-H37-X1 | 37         |
| RAB-VP-H42-X1 | 42         |
| RAB-VP-H45-X1 | 45         |
| RAB-VP-H47-X1 | 47         |

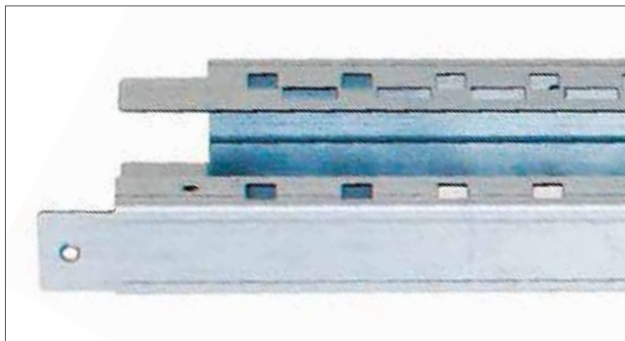
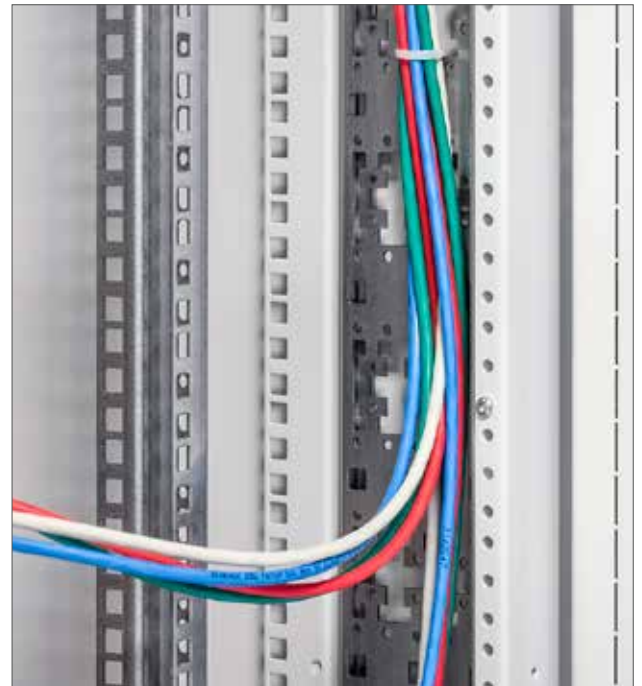


RAX-VP-Vxx-X2

## ■ RAX-VP-Vxx-X2

Vertical cable management rail for RTA, RYA, RDA, RSX and RSX-F cabinets. Suitable for widths 600 mm and 800 mm.

| Type          | Height (U) |
|---------------|------------|
| RAX-VP-V32-X2 | 32         |
| RAX-VP-V37-X2 | 37         |
| RAX-VP-V42-X2 | 42         |
| RAX-VP-V45-X2 | 45         |
| RAX-VP-V47-X2 | 47         |



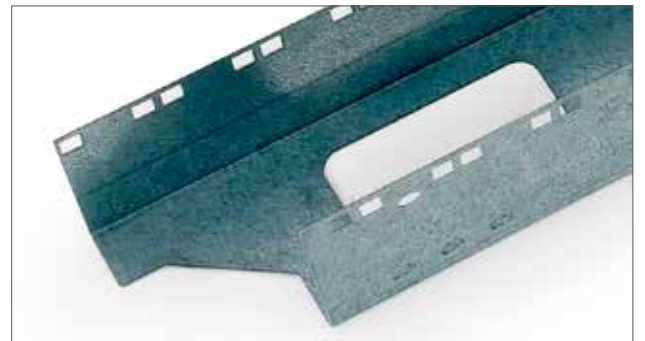
## ■ RAX-VC-Xxx-X2 – one piece RAX-VC-Xxx-X1 – set of 4 pieces

Vertical cable canal 15-45U for RMA and RZA with a width of 800 mm and for open frames RSX. C-shape with additional 19" installation openings 1U. It is made of 1,5 mm thick galvanized steel and is designed for installations on vertical rails to the cabinet side panel area. On the front side, there are additional 19" installation openings 1U high which increase the overall capacity of the cabinet.

| Type X1       | Type X2       | Height (U) |
|---------------|---------------|------------|
| RAX-VC-X15-X1 | RAX-VC-X15-X2 | 15         |
| RAX-VC-X18-X1 | RAX-VC-X18-X2 | 18         |
| RAX-VC-X22-X1 | RAX-VC-X22-X2 | 22         |
| RAX-VC-X27-X1 | RAX-VC-X27-X2 | 27         |
| RAX-VC-X32-X1 | RAX-VC-X32-X2 | 32         |
| RAX-VC-X37-X1 | RAX-VC-X37-X2 | 37         |
| RAX-VC-X42-X1 | RAX-VC-X42-X2 | 42         |
| RAX-VC-X45-X1 | RAX-VC-X45-X2 | 45         |
| RAX-VC-X47-X1 | RAX-VC-X47-X2 | 47         |

### Supply (per piece)

|                                      |    |
|--------------------------------------|----|
| Screw m5 with integrated washe ..... | 3x |
| Enlarged washer 5,3 .....            | 7x |
| Nut beneath vertical rail .....      | 1x |
| Screw M5 x 12 .....                  | 4x |



## ■ RAX-VP-Xxx-X2 – one piece RAX-VP-Xxx-X1 – set of 4 pieces

Vertical cable canal 15-45U for RMA and RZA with a width of 800 mm for open frames RSX. It is made of 1,5 mm thick galvanized steel and is designed for installations on vertical rails to the cabinet side panel area. Cable management rings can be installed on the cable canal for a better organisation of cables. They are not included in the supply.

| Type X1       | Type X2       | Height (U) |
|---------------|---------------|------------|
| RAX-VP-X15-X1 | RAX-VP-X15-X2 | 15         |
| RAX-VP-X18-X1 | RAX-VP-X18-X2 | 18         |
| RAX-VP-X22-X1 | RAX-VP-X22-X2 | 22         |
| RAX-VP-X27-X1 | RAX-VP-X27-X2 | 27         |
| RAX-VP-X32-X1 | RAX-VP-X32-X2 | 32         |
| RAX-VP-X37-X1 | RAX-VP-X37-X2 | 37         |
| RAX-VP-X42-X1 | RAX-VP-X42-X2 | 42         |
| RAX-VP-X45-X1 | RAX-VP-X45-X2 | 45         |

### Supply (per piece)

|                                      |    |
|--------------------------------------|----|
| Screw m5 with integrated washe ..... | 3x |
| Enlarged washer 5,3 .....            | 7x |
| Nut beneath vertical rail .....      | 1x |
| Screw M5 x 12 .....                  | 4x |