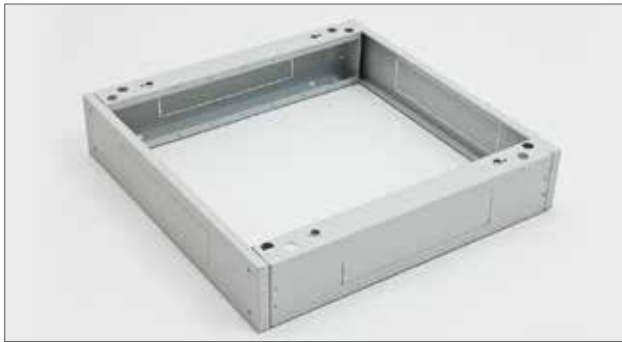


Bases, filters



■ RAB-PO-Xxx-XD, RAC-PO-Xxx-XD

The base is fully universal, which means that it is usable for all types of free-standing cabinets except RSX. The construction of the base is formed of two side profiles which correspond to the depth of the cabinet, and two cover panels (front and back) with a corresponding width. Bases XD series have a load capacity 1800 kg.

Supply includes

- 2x side base profile with a cable entry (with breakout-type blanking panels)
- 2x cover with cable openings (with breakout-type blanking panels)
- 1x cover with a filter
- 1x anti-dust brush
- 4x Screw M10 x 30
- 4x Washer 10,5
- 8x Screw M5 x 30

The bases are delivered dismantled. The second dust filter for the second cover replacing can be easily ordered later. The base always exactly copies the ground plan of the cabinet regardless of installation of filter. The bases are standardly supplied in widths of 600 and 800 mm and depths from 600 to 1200 mm. All the bases are 120 mm high.



Type	Dimensions (mm)	Maximum recommended load (kg)
RAx-PO-X66-XD	600 x 600	1900
RAx-PO-X68-XD	600 x 800	1900
RAx-PO-X69-XD	600 x 900	1900
RAx-PO-X61-XD	600 x 1000	1900
RAx-PO-X60-XD	600 x 1100	1900
RAx-PO-X62-XD	600 x 1200	1900
RAx-PO-X86-XD	800 x 600	1900
RAx-PO-X88-XD	800 x 800	1900
RAx-PO-X89-XD	800 x 900	1900
RAx-PO-X81-XD	800 x 1000	1900
RAx-PO-X80-XD	800 x 1100	1900
RAx-PO-X82-XD	800 x 1200	1900

TIP: The base is prepared for installation of stabilisers, which are highly recommended to use on cabinets with sliding servers.



■ RAB-PO-XFx-X1, RAC-PO-XFx-X1

Filter for bases.

Type	Dimensions – w * h (mm)
RAx-PO-XF1-X1	600 x 120
RAx-PO-XF2-X1	800 x 120

Supply

Screw M5 x 30 4x



■ RAB-SS-X01-X1, RAC-SS-X01-X1

Stabilizers for free-standing cabinets.

Supply

Screw M5 x 12 4x